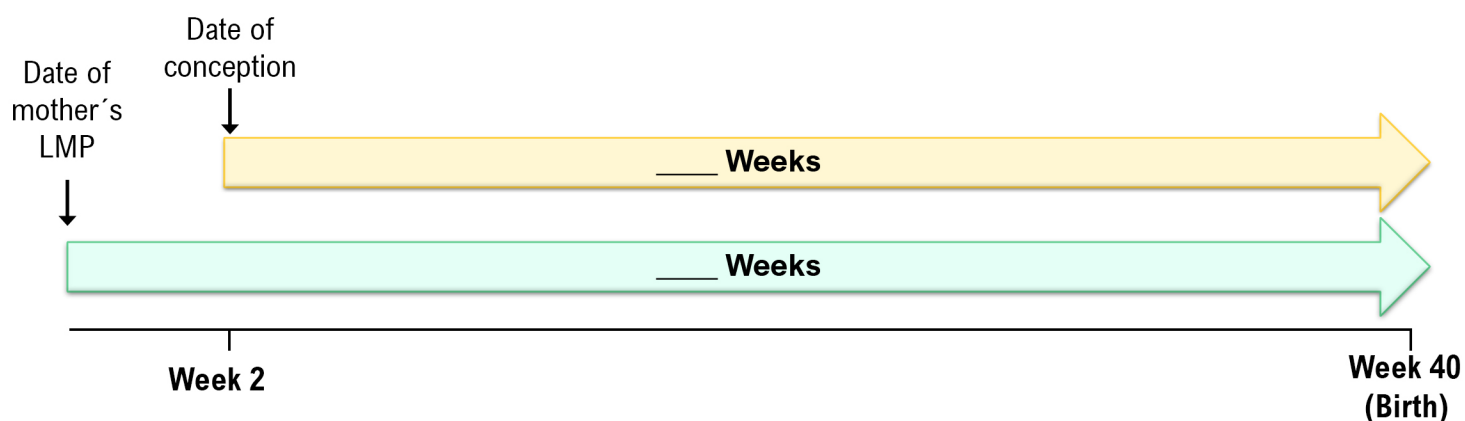
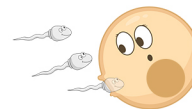


## TOPIC: INTRODUCTION TO HUMAN DEVELOPMENT

### Introduction

- ◆ **Conception:** The moment when an \_\_\_\_\_ is fertilized by a sperm cell; marks the beginning of development.
- ◆ **Conceptus:** The developing offspring; can refer to an embryo or \_\_\_\_\_.
- ◆ **Gestational (\_\_\_\_\_) Period:** Time during which development of conceptus occurs.
  - ▶ Extends from date of mother's \_\_\_\_\_ menstrual period (LMP) until birth (approximately 40 weeks ).
  - ▶ At the moment of conception a mother is already considered \_\_\_\_\_ weeks pregnant!



- ▶ This course will be focusing on the 38 weeks of prenatal development, from conception until birth.

### EXAMPLE

Judy takes a pregnancy test after realizing her period is one day late. When the test comes back positive, she immediately calls her OBGYN to set up an appointment. On the phone, she tells them the date of her last menstrual period and is confused when the doctor refers to her as being '4 weeks pregnant' already. If you were the doctor, how would you explain this to Judy?

- Conception typically takes place within 1-2 days of the menstrual period ending, so using the date of the last period is a pretty accurate marker for pregnancy.
- Important prenatal events like placenta development actually take place in the time between a menstrual period and conception.
- We often measure pregnancy starting with the date of a woman's last period rather than the date of conception because reporting tends to be more accurate – which means for 2 of those 4 weeks you weren't even pregnant yet!
- It's impossible to accurately predict the date of conception, so it's best to just ballpark it.

## TOPIC: INTRODUCTION TO HUMAN DEVELOPMENT

### PRACTICE

True or False (if false, choose the answer that would correct the statement): Conception is the moment an embryo begins to develop.

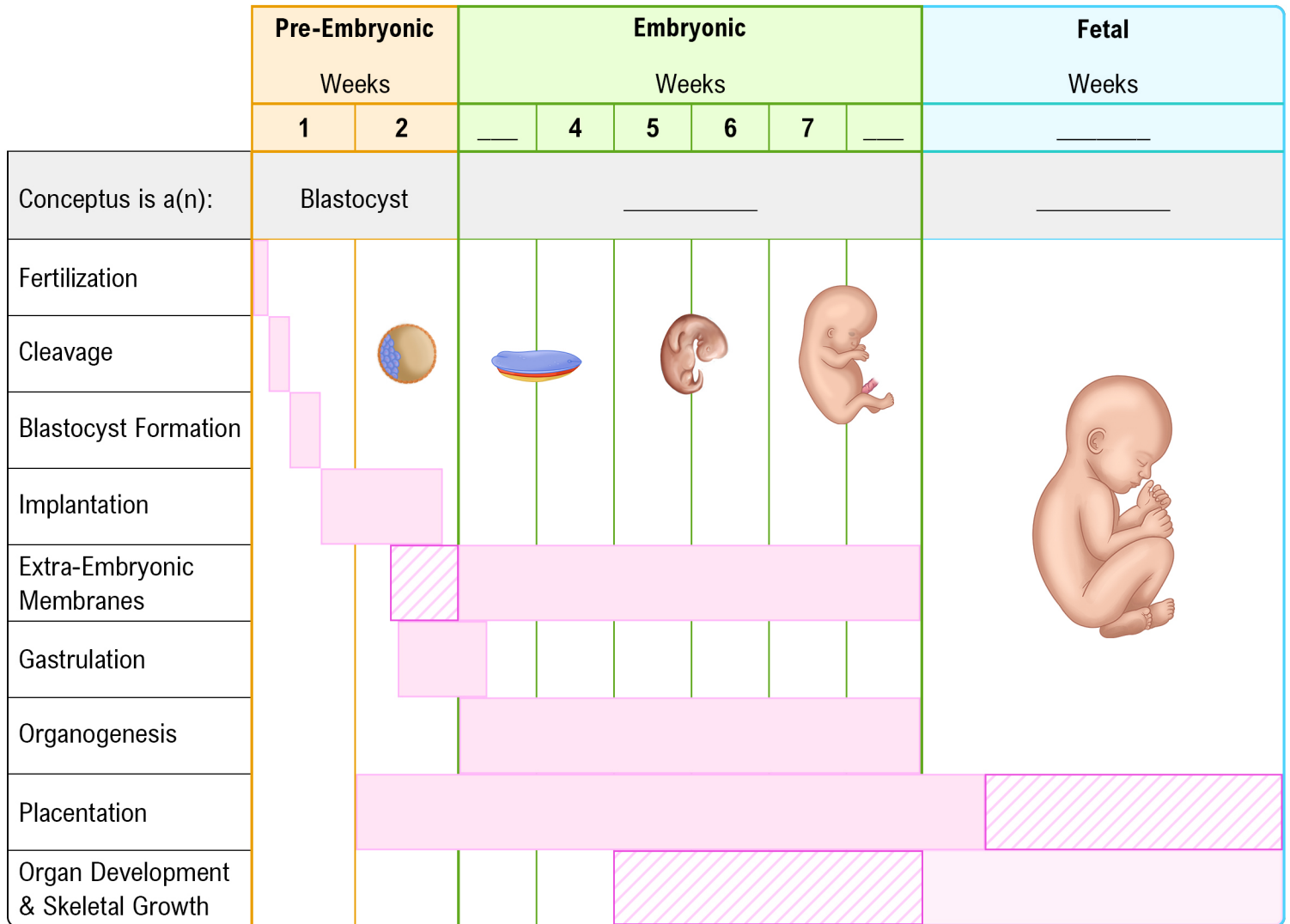
---


- a) True.
- b) False: Conception is the moment a person discovers they are pregnant.
- c) False: Conception is the moment an oocyte is fertilized by a sperm cell.
- d) False: Conception is the act of sexual intercourse.


## TOPIC: INTRODUCTION TO HUMAN DEVELOPMENT

### Timeline of the Prenatal Period

◆ The gestational period is often divided into \_\_\_\_ stages:



 Major development

 Some development

### EXAMPLE

At 10 weeks a conceptus is commonly referred to as a/an\_\_\_\_\_.

- a) Blastocyst.
- b) Embryo.
- c) Fetus.
- d) Infant.