

## TOPIC: CLASSES OF CONNECTIVE TISSUE

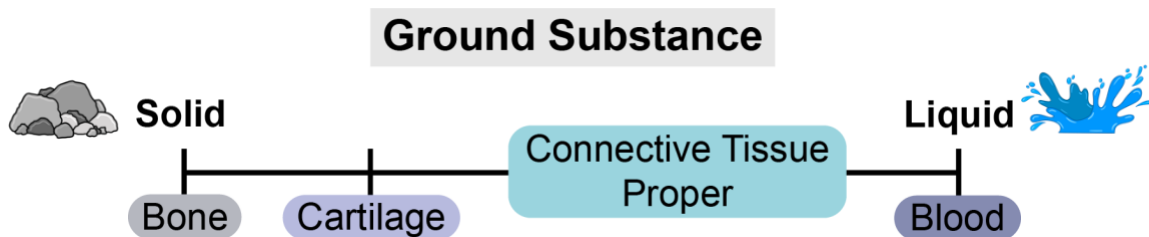
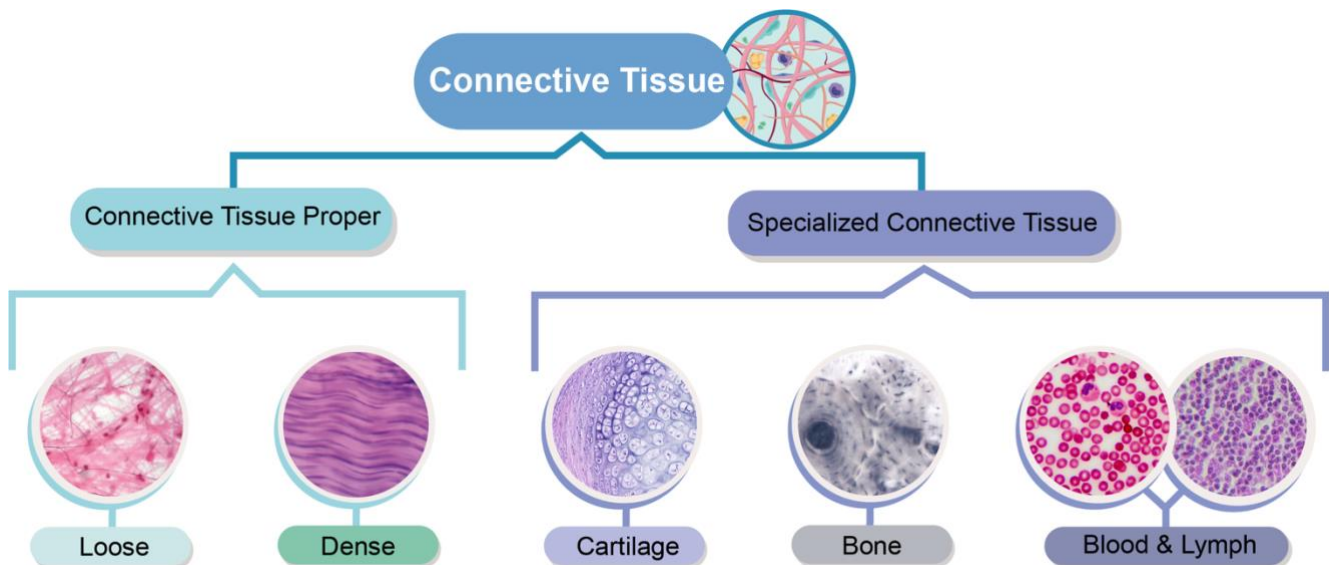
- Because connective tissues are so *diverse*, they can be grouped in *different* ways.
- This lesson groups connective tissue into \_\_\_\_\_ major classes:

**1. Connective Tissue Proper (General Connective Tissue):** *generalized* functions, gelatinous ground substance.

□ Includes \_\_\_\_\_ & *Dense* Connective Tissues.

**2. Specialized Connective Tissue:** *specific* functions unique to the tissue with solid or liquid ground substance.

□ Includes \_\_\_\_\_, *Bones, Blood & Lymph*.



**PRACTICE:** Marco and Yara are discussing connective tissue and Marco states that blood can't be a connective tissue because it's a liquid. Yara claims that blood is a specialized connective tissue with a fluid ECM. Who is right and why?

- Marco because blood doesn't have a ground substance so it can't be connective tissue.
- Yara because the viscosity of the ground substance can vary from low to extremely high.
- Marco because connective tissue only includes connective tissue proper.
- Yara because all liquids found in the body are connective tissue.