

TOPIC: EXTRAEMBRYONIC MEMBRANE DEVELOPMENT (WEEKS 2-8)

Extraembryonic Membrane Development (Weeks 2-8)

- ◆ Specialized membranes that develop _____ the embryo.
 - ▶ Protect conceptus and assist with vital functions.

- ◆ Includes the:

Yolk Sac

Forms from cells of the primitive _____.

Only has nutritive function for weeks 2-3.

Eventually goes on to:

- ▶ Form part of the digestive _____.
- ▶ Produce blood cells.
- ▶ Produce early germ cells (_____).

Amnion

Transparent membrane that develops _____ conceptus to create the amniotic cavity.

Secretes **amniotic fluid**:

- ▶ Protects conceptus from trauma.
- ▶ Maintains _____.
- ▶ Supports symmetrical _____ development.

Allantois

Small pocket of embryonic tissue at _____ of yolk sac.

Forms the _____ cord and surrounding vasculature.

Forms a portion of _____ bladder.

Memory Tool:

To remember the function of the yolk sac, think of **Delightful Baby Giggles**.

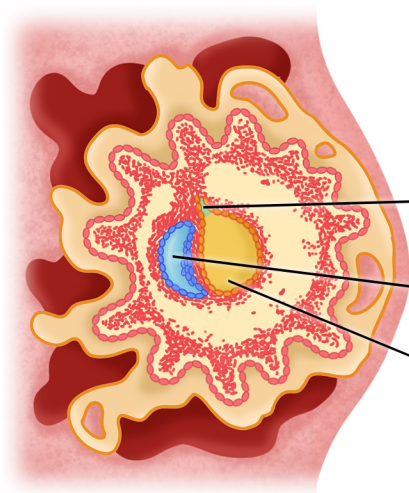
D = Digestion

B = Blood

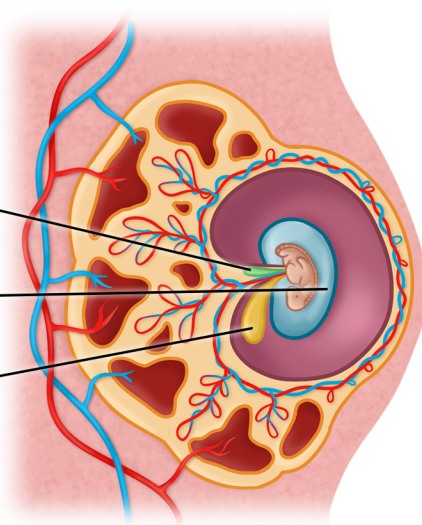
G = Gametes



Week 2



Week 5



_____ sac

TOPIC: EXTRAEMBRYONIC MEMBRANE DEVELOPMENT (WEEKS 2-8)

EXAMPLE

Which of the following is **NOT** a function of amniotic fluid?

- a) It goes on to form a portion of the urinary bladder.
- b) It helps protect the conceptus from trauma.
- c) It helps maintain a consistent temperature.
- d) It helps support symmetrical muscle development.

PRACTICE

The yolk sac goes on to do all of the following EXCEPT:

- a) Form a portion of the digestive tract.
- b) Produce early blood cells.
- c) Produce early germ cells.
- d) Form the umbilical cord.