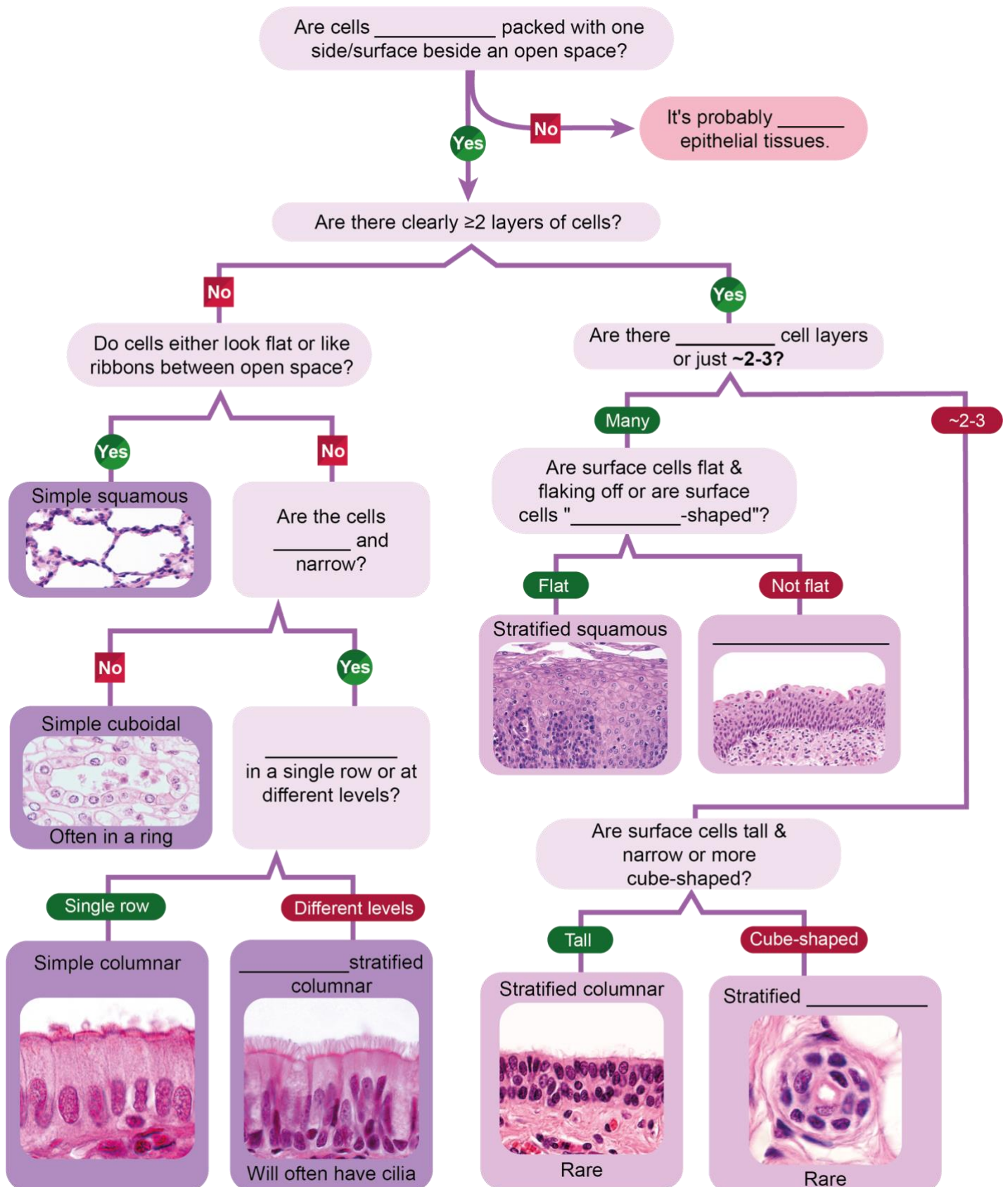


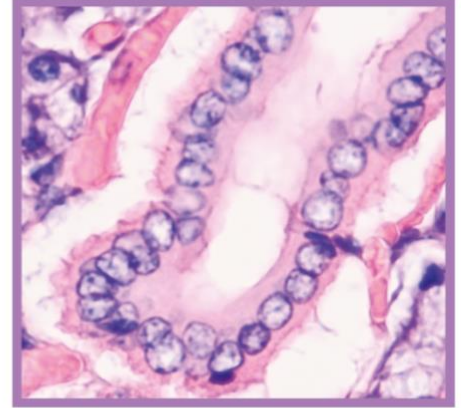
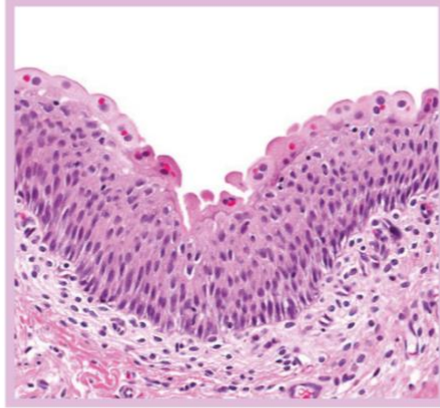
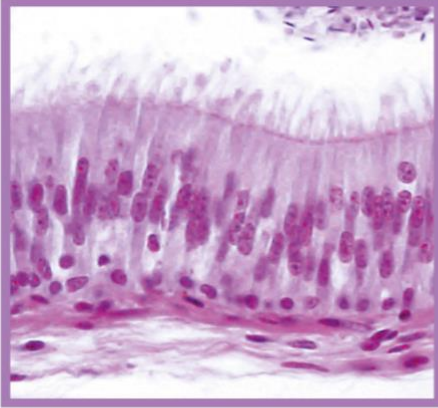
TOPIC: IDENTIFYING TYPES OF EPITHELIAL TISSUE

Epithelium Identification Flow Chart



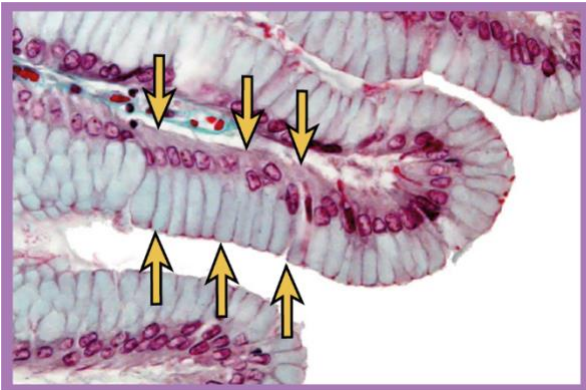
TOPIC: IDENTIFYING TYPES OF EPITHELIAL TISSUE

EXAMPLE: Identify the following epithelial tissues:



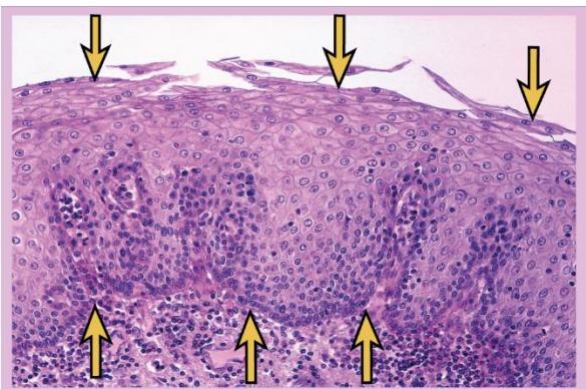
A. _____ **B.** _____ **C.** _____

PRACTICE: Identify the tissue indicated in the slide:



- a) Stratified columnar epithelium.
- b) Pseudostratified columnar epithelium.
- c) Simple columnar epithelium.
- d) Stratified cuboidal epithelium.

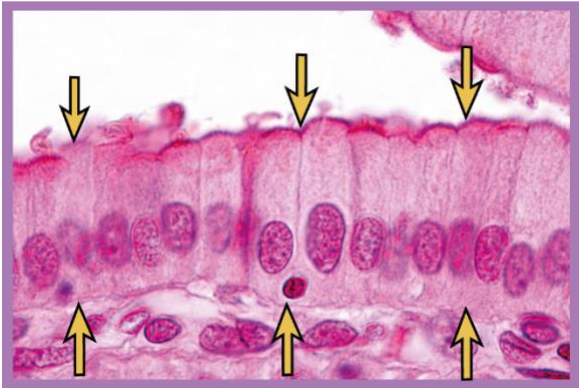
PRACTICE: Identify the tissue indicated in the slide:



- a) Simple cuboidal epithelium.
- b) Stratified squamous epithelium.
- c) Transitional epithelium.
- d) Pseudostratified columnar epithelium.

TOPIC: IDENTIFYING TYPES OF EPITHELIAL TISSUE

PRACTICE: Identify the tissue indicated in the slide:



- a) Stratified squamous epithelium.
- b) Pseudostratified columnar epithelium.
- c) Simple columnar epithelium.
- d) Simple cuboidal epithelium.