

## TOPIC: INTRODUCTION TO THE INTEGUMENTARY SYSTEM

• **Integumentary System:** organ system made of the \_\_\_\_\_, hair, nails, glands, & sensory receptors.

• Composed of \_\_\_\_\_ parts:

1. **Epidermis:** \_\_\_\_\_ layer of skin; made of epithelial tissue (“Epi” = above).

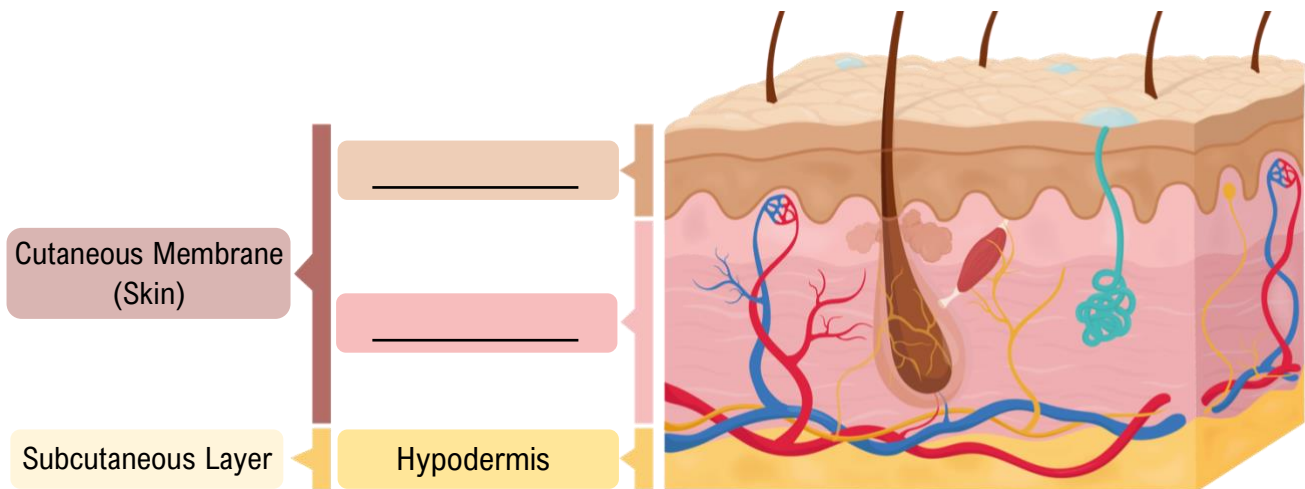
2. **Dermis:** layer of connective tissue \_\_\_\_\_ epidermis & makes up most of skin.

3. **Accessory Structures:** includes \_\_\_\_\_, nails, & sweat/sebaceous glands.

- Beneath cutaneous membrane (skin) lies the \_\_\_\_\_.

**Cutaneous Membrane  
(Skin)**

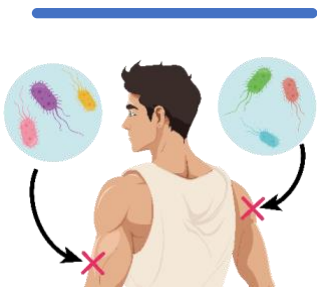
**Subcutaneous Layer**



## Integumentary System Functions

• Integumentary system has \_\_\_\_\_ functions including the following broad functions:

### 1. Provides



Mechanical Stresses.

Barrier to chemicals,  
UV light & microbes.

### 2. Maintains



Regulate body temperature.

Vitamin D synthesis.

Excretions via sweating.

### 3. Allows for



Contains nervous tissue.

### 4. Expressive

Communication & Emotions



Skeletal muscles allow for  
facial expressions.

**PRACTICE:** What does the cutaneous membrane (skin) consist of?

a) Epidermis and accessory structures.

c) Epidermis and dermis.

b) Dermis and accessory structures.

d) Epidermis, dermis, and hypodermis.

## TOPIC: INTRODUCTION TO THE INTEGUMENTARY SYSTEM

### Map of the Lesson on Integumentary System

- Here is a \_\_\_\_\_ you can continuously use to help guide you through our lessons on the integumentary system.

