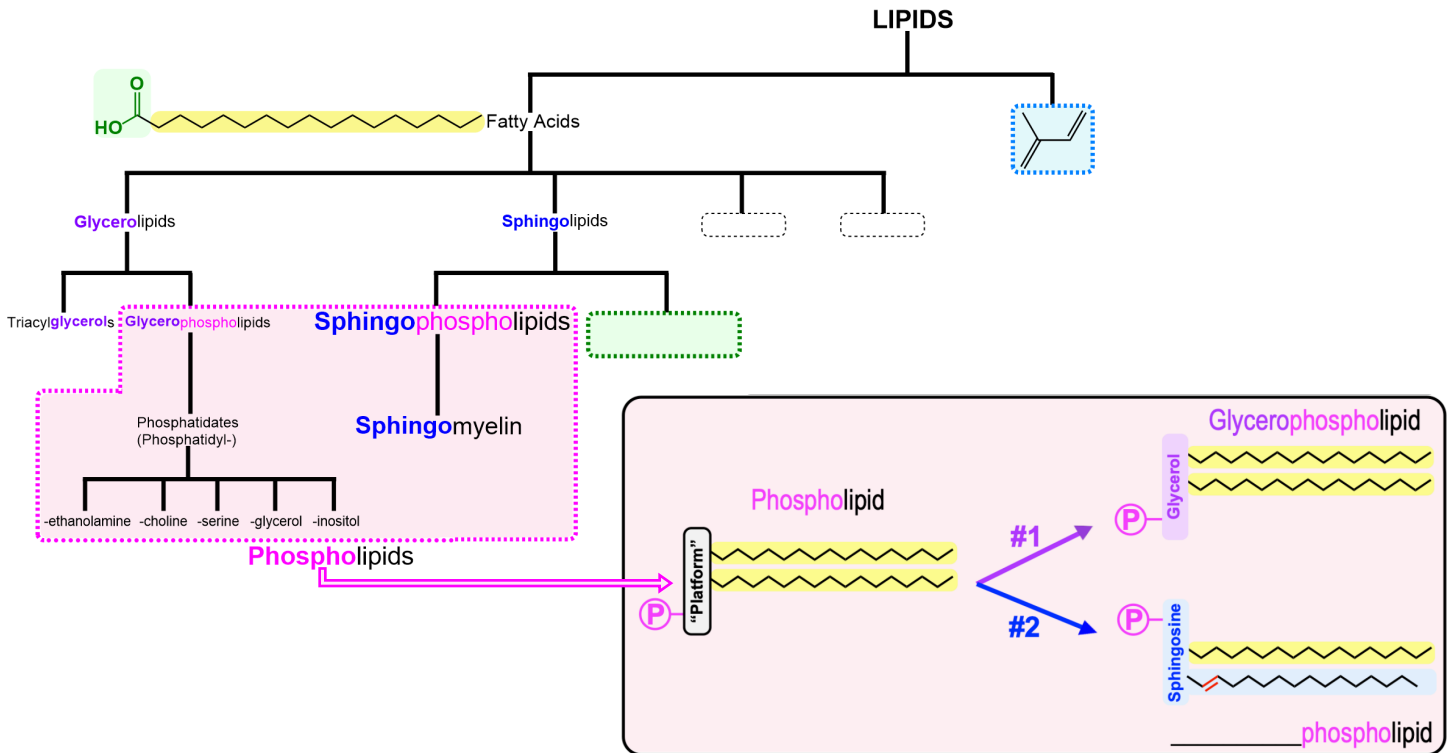


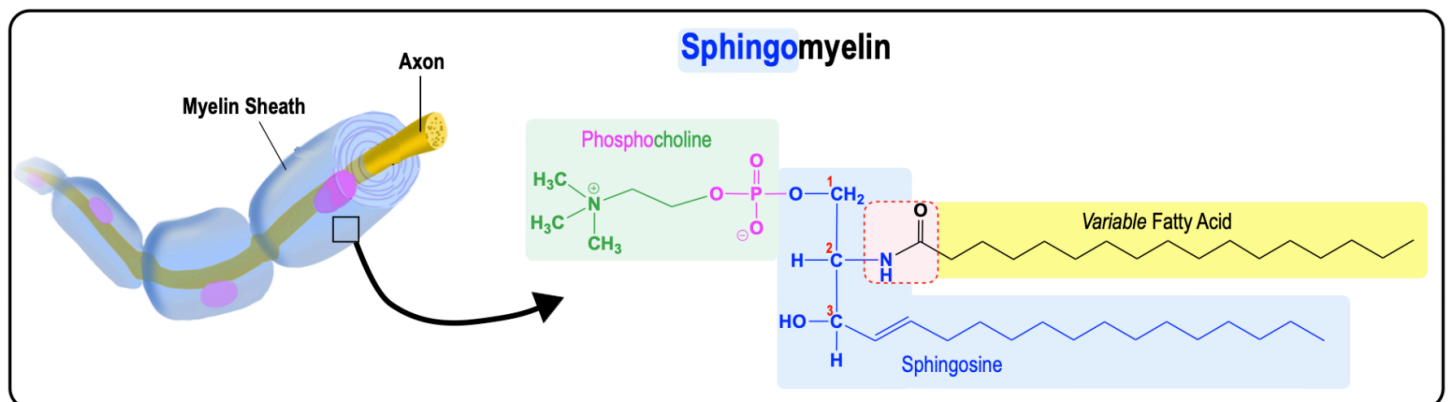
CONCEPT: SPHINGOPHOSPHOLIPIDS

- Sphingophospholipids: sphingolipids covalently attached to a _____ group.



Sphingomyelins: the Most Common Sphingolipids

- _____: sphingophospholipids with either a *phosphocholine* or a *phosphoethanolamine* head group.
 - *Amphipathic* molecules & the most common sphingolipid.
 - Primary structural components of the membranous _____ sheath surrounding *nerve cell axons*.



PRACTICE: Label the following as relating to (A) sphingophospholipids, (B) glycerophospholipids, or (C) triacylglycerols.

- | | |
|--|--|
| a) Contains two variable fatty acids: _____ | d) Commonly utilized for obtaining energy: _____ |
| b) Does not contain a phosphate group: _____ | e) Formed from glycerol and three fatty acids: _____ |
| c) Contains an amide linkage: _____ | f) Has a sphingosine backbone: _____ |