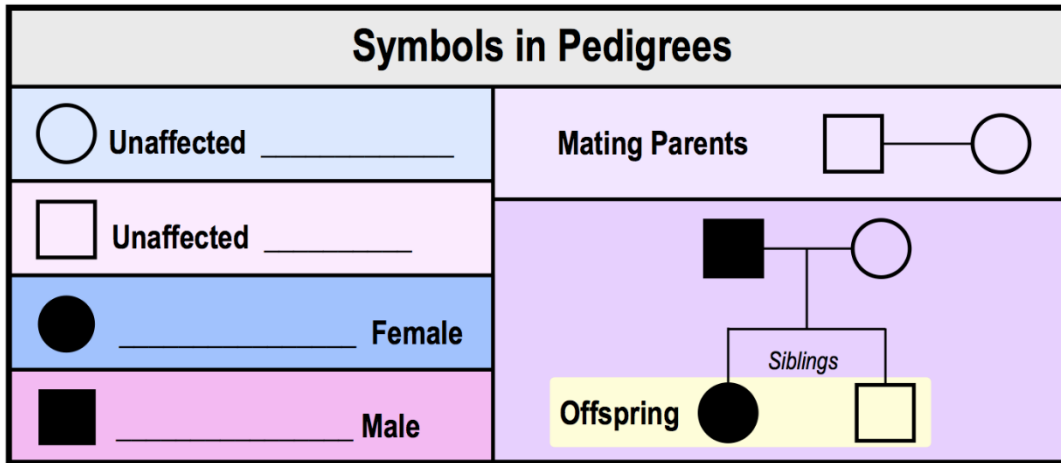


## CONCEPT: PEDIGREES

● **Pedigree:** a chart or “family tree” depicting family \_\_\_\_\_ & *tracking a phenotype* over many generations.

- Circles ( ○ ) = \_\_\_\_\_.
- Squares ( □ ) = \_\_\_\_\_.
- Shaded/colored shapes = \_\_\_\_\_ individuals with the phenotype.
- \_\_\_\_\_ lines connect two mating parents & \_\_\_\_\_ lines connect parents to offspring.

**EXAMPLE:** Symbols & Connections on a Pedigree.

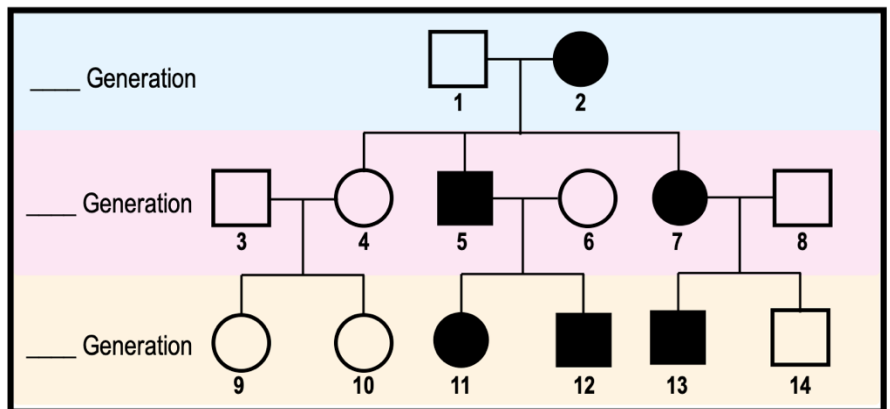


## How to Read Pedigrees

● Pedigrees are typically read from \_\_\_\_\_ to \_\_\_\_\_ starting from the 1<sup>st</sup> generation.

**EXAMPLE:** Determine the relationships between the indicated individuals on the pedigree.

- Person #1 is person #5's \_\_\_\_\_.
- Person #7 & person #4 are \_\_\_\_\_.
- Person #11 is Person #6's \_\_\_\_\_.



**PRACTICE:** Diagrams depicting family relationships and phenotypes for a genetic disorder are:

- a) Pedigree charts.      b) Karyotypes.      c) Punnett squares.      d) Bell-shaped curves.