

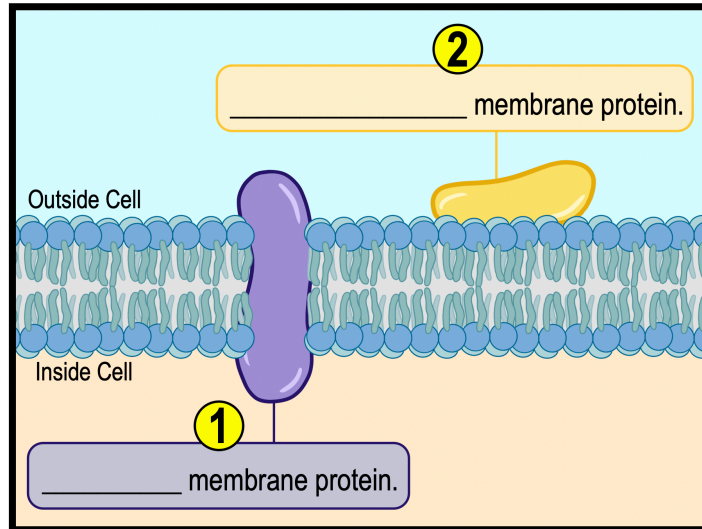
## CONCEPT: TYPES OF MEMBRANE PROTEINS

• \_\_\_\_\_ main types of membrane-associated proteins:

① **Integral Membrane Proteins:** \_\_\_\_\_ within the cell membrane usually spanning the entire bilayer.

② **Peripheral Membrane Proteins:** proteins on the \_\_\_\_\_ (or perimeter) of a cell membrane.

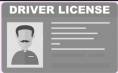





**EXAMPLE:** Types of Membrane-Proteins.



## Membrane Protein Functions

• Membrane-associated proteins can perform a *wide* \_\_\_\_\_ of functions, including the following:



_____ecognition - marks cell for identification.	
_____nchorage - cell cytoskeleton & ECM anchoring.	
_____ransduction - signal molecule receptors.	
_____ransport - molecular transport across membrane.	
_____inkage - connects two cells via protein linkage.	
_____nzymes - many types of enzymatic processes.	

**PRACTICE:** Which of the following is NOT a function of membrane proteins?

- Transducing signals from the environment into the cell.
- Synthesizing proteins.
- Anchoring the cell cytoskeleton and extracellular matrix.
- Marking cells for recognition.