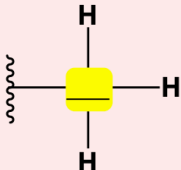

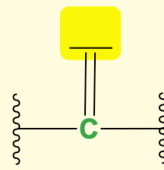
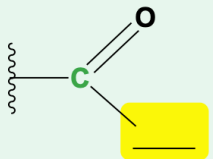
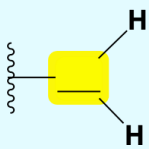
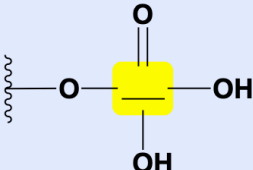
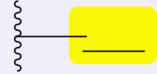


## CONCEPT: FUNCTIONAL GROUPS

● **Functional groups:** groups of atoms that are *reactive/* \_\_\_\_\_ & *commonly* found together.

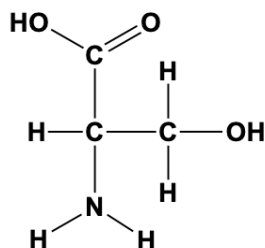
□ Typically extend off of the *carbon backbone* of a molecule.

□ \_\_\_\_\_ functional groups are common in biology:

<p>① _____ Group</p> 	<p>② _____ Group</p> 	<p>③ _____ Group</p> 	<p>④ _____ Group</p> 
<p>⑤ _____ Group</p> 	<p>⑥ _____ Group</p> 	<p>⑦ _____ Group</p> 	

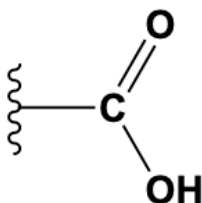
**EXAMPLE:** Which functional group is not present in this molecule?

- Carboxyl.
- Sulfhydryl.
- Hydroxyl.
- Amino.



**PRACTICE:** What is the name of the functional group shown in the figure?

- Carbonyl.
- Ketone.
- Carboxyl.
- Methyl.
- Phosphate.



**PRACTICE:** All of the following are examples of functional groups in biology except:

- CH<sub>3</sub>.
- COOH.
- H<sub>2</sub>O.
- NH<sub>2</sub>.
- OH.