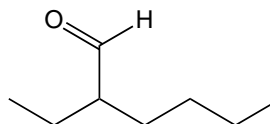


## CONCEPT: NAMING ALDEHYDES

- **Recall:** Aldehydes possess a carbonyl carbon connected to a \_\_\_\_ atom.
- Set of rules for naming aldehydes are similar to ketones.
  - **Exception:** The carbonyl carbon of the aldehyde is always numbered \_\_\_\_.
  - Modify the ending from - \_\_\_\_ to - \_\_\_\_.

location-substituent-parent-modifier

**EXAMPLE:** Provide the systematic name for the following aldehyde.



**STEP 1:** Find the longest carbon chain (parent chain) and assign name according to the prefixes and modifier.

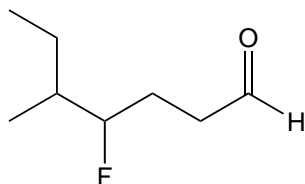
- Parent chain should include the aldehyde group and have \_\_\_\_\_ number of carbons.
- If a tie between longest chains, choose chain with more substituents.

**STEP 2:** Assign name to all the substituents.

**STEP 3:** Start numbering the chain at the carbon of the aldehyde group.

**STEP 4 to 6:** Repeat steps from previous naming topics.

**PRACTICE:** Provide the systematic name for the following aldehyde.



**PRACTICE:** Which of the following compounds represent 2-bromo-pentanal?

