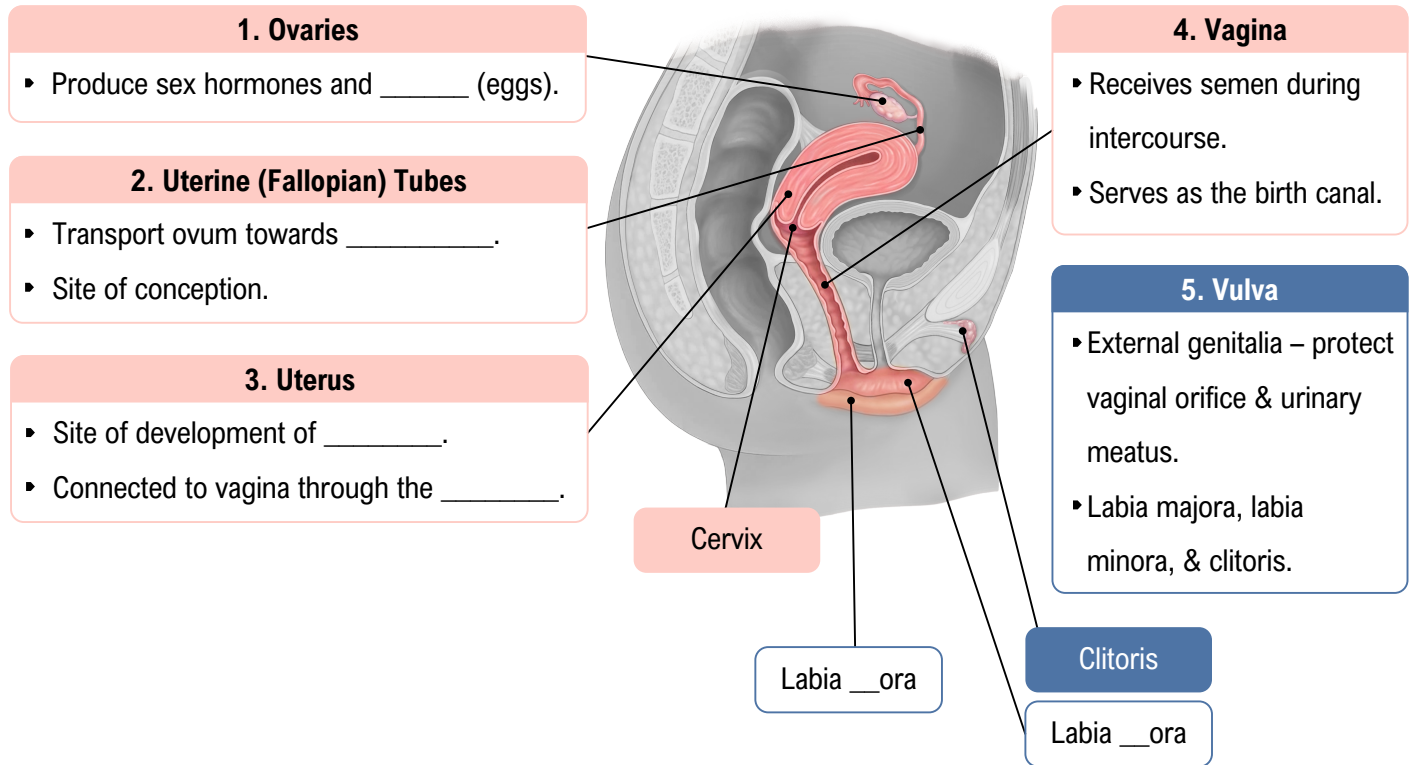


CONCEPT: OVERVIEW OF THE FEMALE REPRODUCTIVE SYSTEM

Introduction to Female Reproductive System

- ◆ Responsible for secretion of sex hormones, _____, gestation, childbirth, and nourishment of newborn.
- ◆ Includes internal & external _____ and accessory organs (breasts).
 - **Internal Genitalia:** Inside _____ cavity.
 - **External Genitalia:** _____ sex organs.



EXAMPLE

Match each of these descriptions with correct organ/structure of the female reproductive system.

1) Transport ovum to the uterus.	
2) Connects the uterus to vagina.	
3) Site of development of fetus.	
4) Produce sex hormones.	

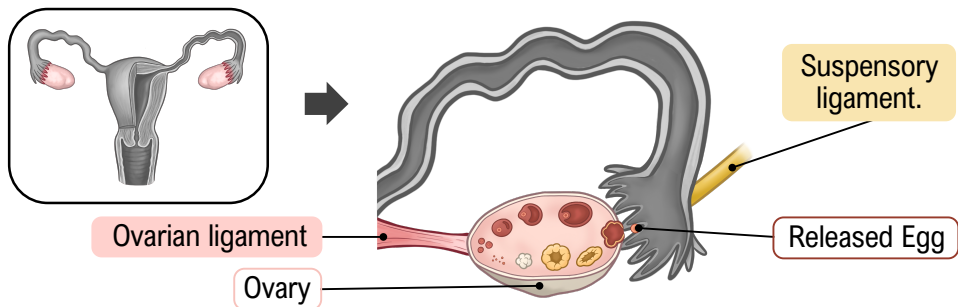
- a) Uterus
- b) Ovaries
- c) Uterine Tubes
- d) Cervix

CONCEPT: OVERVIEW OF THE FEMALE REPRODUCTIVE SYSTEM

Ovaries

Ovaries

- ◆ Small almond-shaped organs located on both sides of the _____.
 - Attached to uterus by **ovarian ligament** & to pelvis by **suspensory ligament**.
- ◆ **Ovulation**: The process by which an ovary releases an _____.
 - FSH & LH stimulate ovum maturation and trigger ovulation approx. every 28 days.



EXAMPLE

Which of the following statements about the ovaries is true?

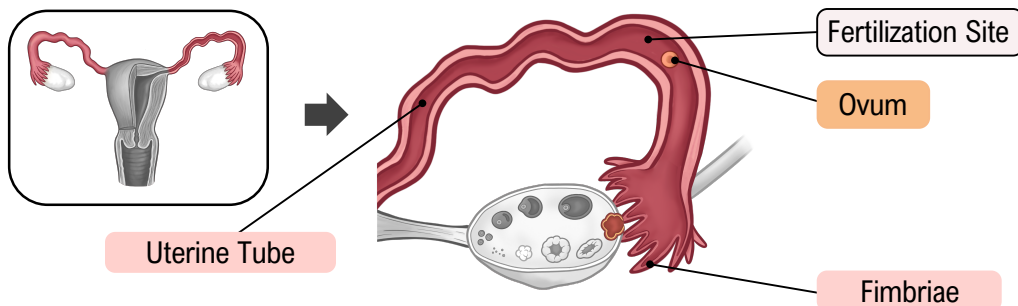
- Ovaries are responsible for producing ova and sex hormones FSH and LH.
- Ovulation is the process by which an ovum produces estrogen.
- Ovaries are held in place by the ovarian and suspensory ligaments.
- Ovaries are located on the anterior and posterior sides of the uterus.

CONCEPT: OVERVIEW OF THE FEMALE REPRODUCTIVE SYSTEM

Uterine Tubes

Uterine Tubes

- ◆ Also called _____ tubes or oviducts, run from the top of the uterus to near the ovaries.
- ◆ **Fimbriae:** _____-like projections at the ends of each uterine tube.
 - Catch the released ovum and propel it _____ the tube.
 - Fertilization takes place in the _____ part of the tube.
- ◆ Estrogen & progesterone from ovaries prepare uterus to receive the fertilized ovum.



EXAMPLE

Identify each of the following statements as true (T) or false (F).

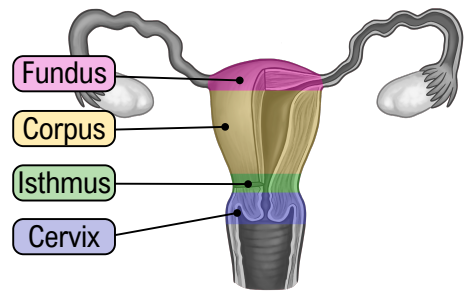
1) The uterine tubes connect ovaries to the lower region to the uterus.	
2) Fimbriae are finger-like projections that help capture the released ovum.	
3) Fertilization takes place after ovum is transferred to the uterus.	
4) Ovaries produce hormones that prepare uterus for pregnancy.	

CONCEPT: OVERVIEW OF THE FEMALE REPRODUCTIVE SYSTEM

Uterus

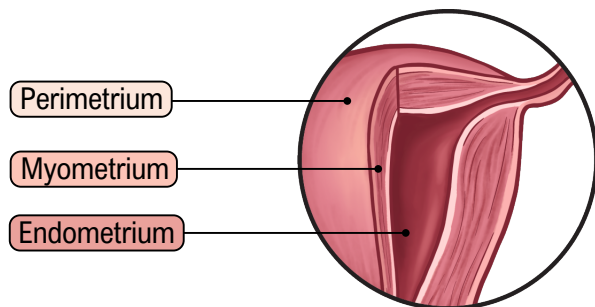
Uterus

- ◆ Hollow pear-shaped organ with thick muscular walls & _____ lining.
- ◆ Divided into 4 regions:
 - **Fundus:** Rounded _____ region between uterine tubes.
 - **Corpus (Body):** Large _____ portion.
 - **Isthmus:** Narrow region, below corpus.
 - **Cervix:** _____ of uterus, opens into vagina.



Uterus Layers

- ◆ Uterine wall is made up of ___ layers.
 - **Perimetrium:** Outer layer.
 - **Myometrium:** Middle _____ layer.
 - **Endometrium:** Inner _____ lining.



EXAMPLE

Match each of these descriptions with correct structural feature of the uterus.

1) Thick muscular layer of the uterus.	
2) Neck of the uterus.	
3) Mucous lining inside the uterus.	
4) Area where oviducts attach.	

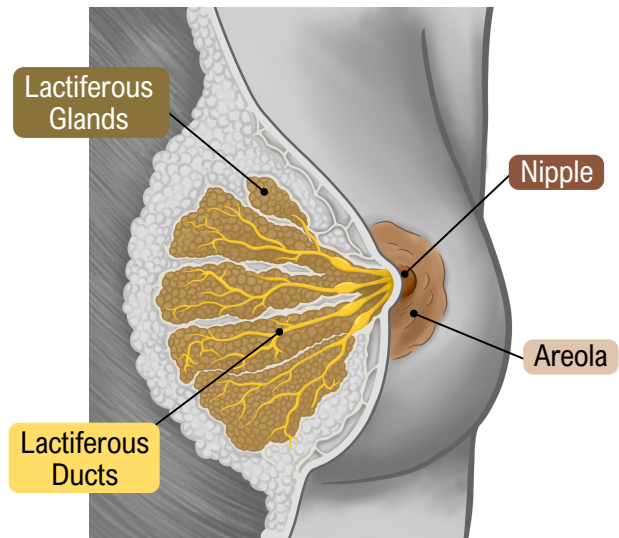
- a) Endometrium
- b) Fundus
- c) Perimetrium
- d) Cervix
- e) Myometrium

CONCEPT: OVERVIEW OF THE FEMALE REPRODUCTIVE SYSTEM

Breasts

Breast Anatomy

- ◆ **Mammary Glands:** Play important role in reproduction & the nourishment of newborn.
 - **Lactation:** Production of _____.
- ◆ **Lactiferous Glands:** Produce milk.
- ◆ **Lactiferous Ducts:** _____ milk to the nipple.
- ◆ **Nipple:** Point of release of milk from breast.
- ◆ **Areola:** Pigmented area around nipple.



EXAMPLE

Match each of these descriptions with correct part of the mammary glands.

1) A projection on the anterior side of the breast.	
2) Transports milk towards the nipple.	
3) Pigmented circular area on the anterior side of breast.	
4) Specialized tissues that produce milk.	

- a) Areola
- b) Lactiferous gland
- c) Lactiferous sinus
- d) Nipple
- e) Lactiferous duct

PRACTICE

Identify which of the following statements about the female reproductive system is true?

- a) The cervix is the part of the uterus where fertilization takes place.
- b) External female genitalia are collectively referred to as mons pubis.
- c) FSH and LH are pituitary hormones that stimulate ovum maturation and ovulation.
- d) Perimetrium is the thickest layer of the uterine wall.