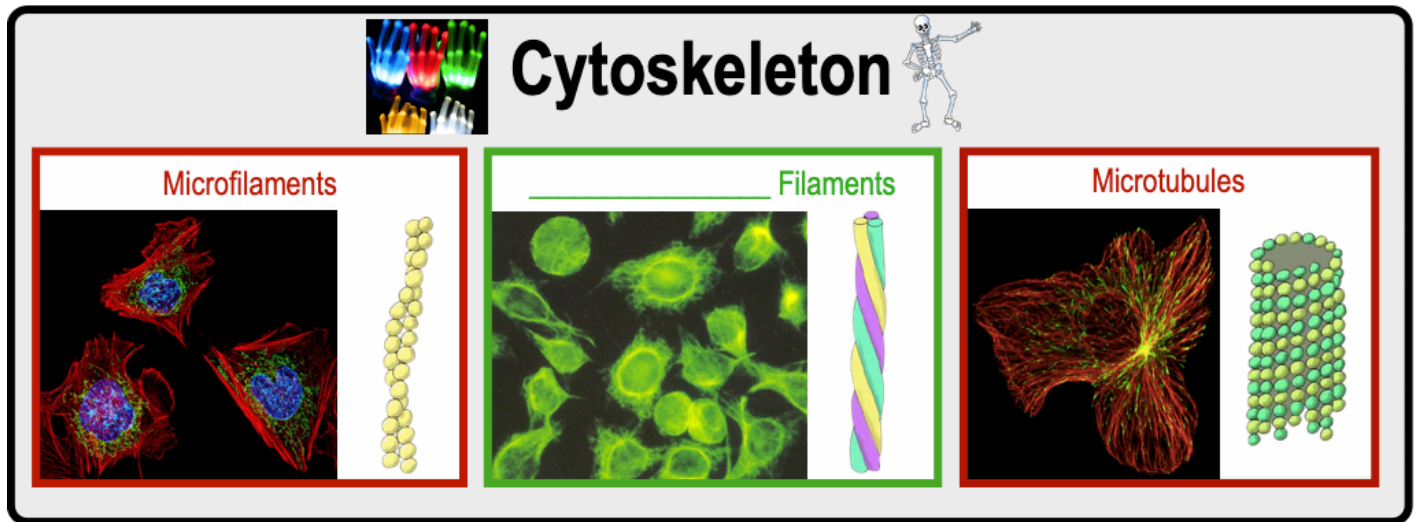


## CONCEPT: INTRODUCTION TO THE CYTOSKELETON

- **Cytoskeleton:** a network of elongated proteins in the \_\_\_\_\_ with multiple functions.
  - *Functions* include providing cell-\_\_\_\_\_, *structure*, \_\_\_\_\_, *transportation*, & *biosignaling*.
- \_\_\_\_\_ major components of the *cytoskeleton*:
  - 1) **Microfilaments:** \_\_\_\_\_ in size & usually made of thin rods of repeating \_\_\_\_\_ proteins.
  - 2) **Intermediate Filaments:** \_\_\_\_\_ in size & made of *variable* proteins.
  - 3) **Microtubules:** \_\_\_\_\_ in size & forming *tubes* made of repeating \_\_\_\_\_ proteins.



**PRACTICE:** Microfilaments are made of repeating subunits of...

- Actin proteins.
- Tubulin proteins.
- Micro proteins.
- A variety of proteins.

**PRACTICE:** Which of the following is NOT a part of the cytoskeletal system of a cell?

- Microtubules.
- Intermediate Filaments.
- Chromatin.
- Microfilaments.