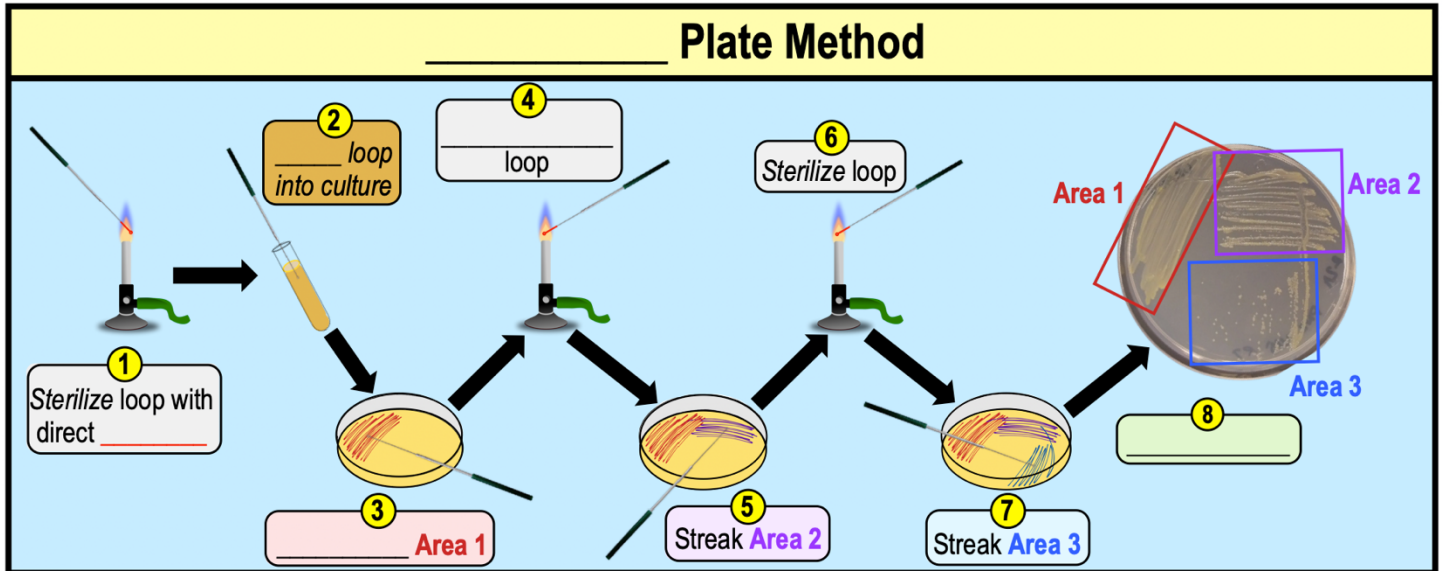


CONCEPT: PLATING METHODS

Streak-Plate Method

- _____-plate method: most common & simplest way of *isolating* microbes in a laboratory.
 - Mixed culture of cells transferred to a *Petri dish* & _____ across the plate using an *inoculator*.
 - _____: metal or glass *loop* used to isolate & transfer colonies between growth media.
- The method is outlined in a series of ____ steps:



PRACTICE: The streak-plate method is useful for:

- Quantify the number of cells in a culture.
- Measuring the metabolism of a cell.
- Isolating a specific species of bacteria.
- Determine cell shape of bacteria.

PRACTICE: In the streak-plate method, what is done with the inoculating loop after each streak?

- It is discarded and another one is used.
- It is re-introduced to the culture stock.
- It is disinfected with an antiseptic.
- It is flamed until the loop is red with heat.

CONCEPT: PLATING METHODS

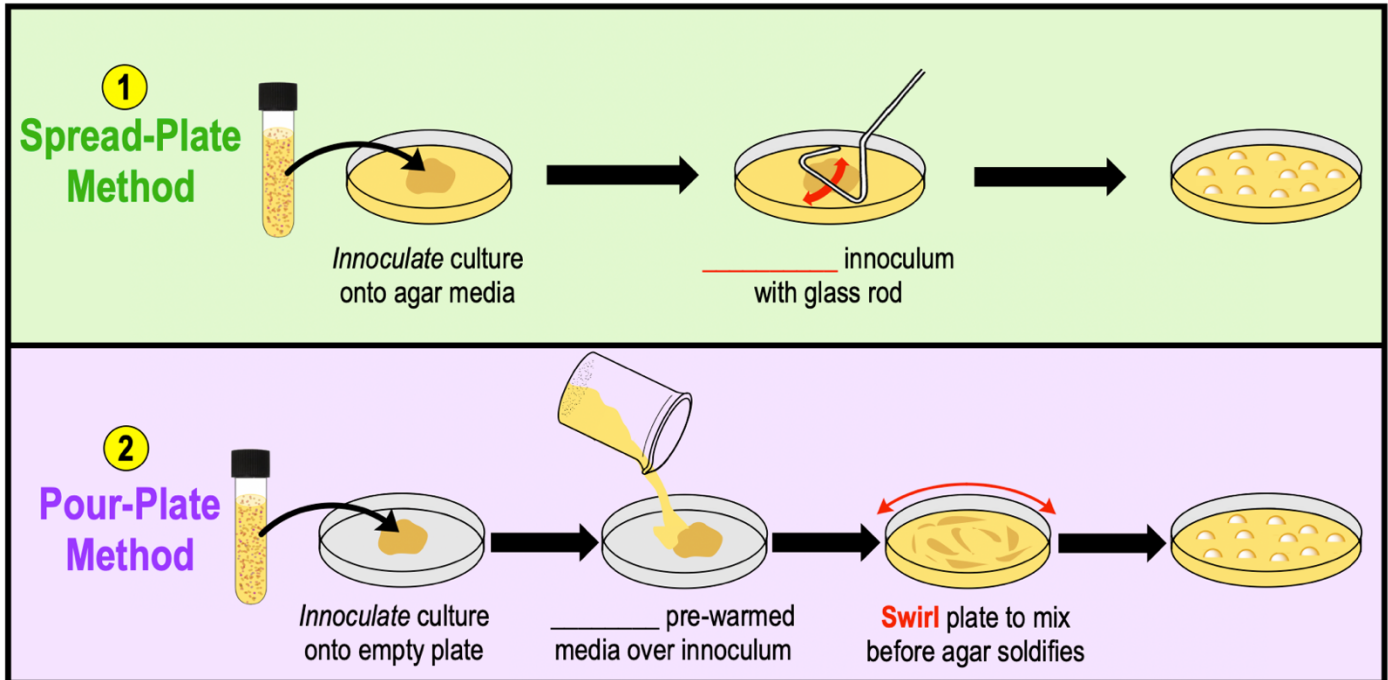
Spread-Plate Method vs. Pour-Plate Method

● When transferring a liquid culture to a plate, cultures can be added to the plate in one of _____ methods:

① **Spread-plate:** 0.1-0.2 mL *diluted* liquid culture is added to an agar plate & _____ with a *sterile* glass rod.

② _____-plate: 0.1-1.0 mL *diluted* liquid culture is poured on an agar plate _____ warmed (liquid) agar is.

□ Warmed *liquid* agar media _____ after it is mixed with the sample.



● Unlike the streak-plate method, these can NOT be used to isolate a species of bacteria from a mixed culture.

PRACTICE: The _____ method is used to isolate microbial colonies while the _____ method is used to count the number of viable microbial cells or colonies.

- a) Spread-plate method; Pour-plate method.
- b) Streak-plate method; Spread-plate method.
- c) Pour-plate method; Steak-plate method.
- d) Pour-plate method; Spread-plate method.

PRACTICE: Which plating method can be used to isolate a species of bacteria from a mixed culture of cells?

- a) Pour-plate method.
- b) Streak-plate method.
- c) Spread-plate method.
- d) All methods can be used.