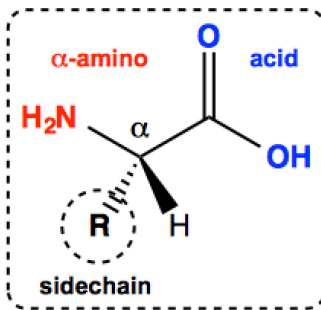


CONCEPT: INTRODUCTION TO PROTEINS

Proteins are *polypeptides* that have some biological function.

- Peptides are composed of polymers of monomeric units called ***α-amino acids***

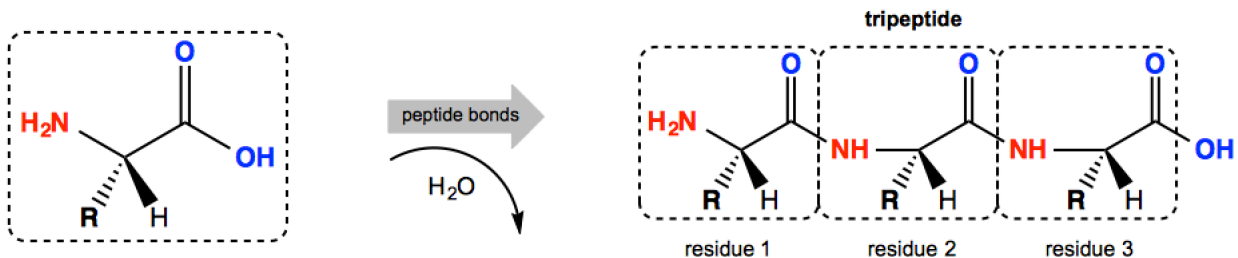
□ The 20 most common **α-amino acids** found in proteins differ only in the identity of the the ____ group *sidechain*



- Amino acids form peptide polymers via _____ bonds. This polymer is also called ***primary structure***

□ Dipeptide = ____-amino acid polymer □ Oligopeptide = ____ to ____-amino acid polymer
□ Tripeptide = ____-amino acid polymer □ Polypeptide = ____ to ____-amino acid polymer

- Each *dehydrated* amino acid is called a _____



Standard Amino Acids:

Over 700 amino acids occur naturally, however the 20 most common amino acids all share the following traits:

- They are **α-amino acids**
- They have an L-(S)-configuration at the chiral carbon

EXAMPLE: Circle the amino acids you believe to be standard. Place a box around non-standard (rare) amino acids.

