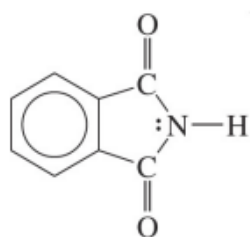


### CONCEPT: GABRIEL SYNTHESIS

Potassium phthalimide is a secondary diamide that can yield primary amines in much better yield when treated with

1. \_\_\_\_\_ (to turn it into a strong nucleophile)
2. \_\_\_\_\_ (back-side attack)
3. \_\_\_\_\_ (to attack the carbonyls)



**Phthalimide**

Gabriel Synthesis Mechanism: