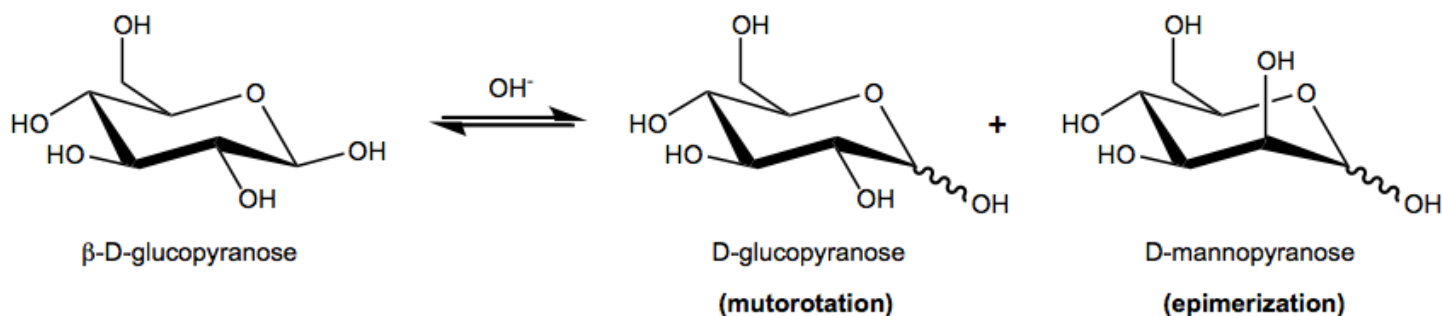


CONCEPT: MONOSACCHARIDES – EPIMERIZATION

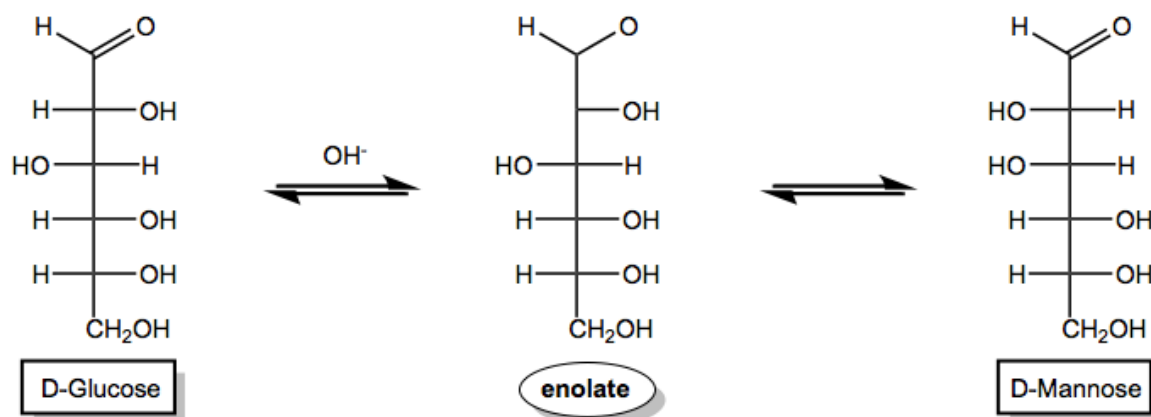
In basic conditions, monosaccharides will undergo a multitude of *tautomerizations* and *isomerizations*.

- The most straightforward of these is **epimerization**. Monosaccharides will readily epimerize the _____ position
 - Several possible mechanisms exist. Can proceed through an *enolate* or *enediol* intermediate

General Reaction:



Enolate Mechanism:



Enediol Mechanism:

