

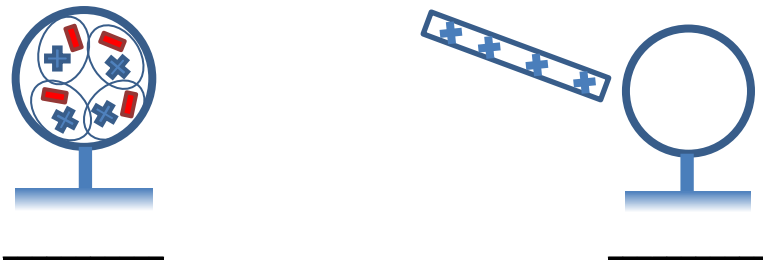
## CONCEPT: CHARGING OBJECTS

- Electricity: The \_\_\_\_\_ of electrons & electric charge.
- Materials come in two types: \_\_\_\_\_ and \_\_\_\_\_
  - Conductors ( **ALLOW** | **DON'T ALLOW** ) electrons/charges to move (e.g. metals)
  - Insulators ( **ALLOW** | **DON'T ALLOW** ) electrons/charges to move (e.g. plastics, rubber)
- Rubbing objects together strips electrons from one and gives to the other
  - Fur & plastic rod = rod has — charge    - Fur & glass rod = rod has + charge

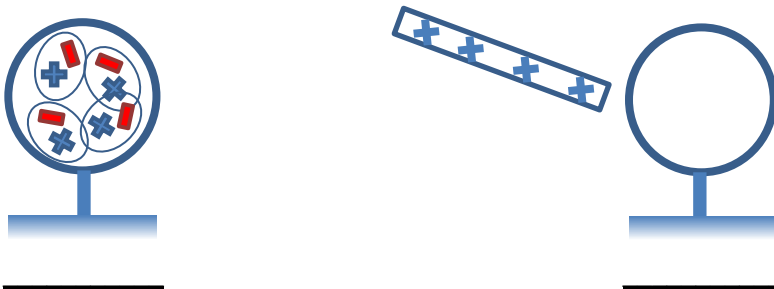
• Like charges ( **ATTRACT** | **REPEL** ) and unlike charges ( **ATTRACT** | **REPEL** ).

- POLARIZATION = separation of charges → NO NET CHARGE

- In CONDUCTORS:



- In INSULATORS:



- CONDUCTION = transfer of charges through physical contact → NET CHARGE

